

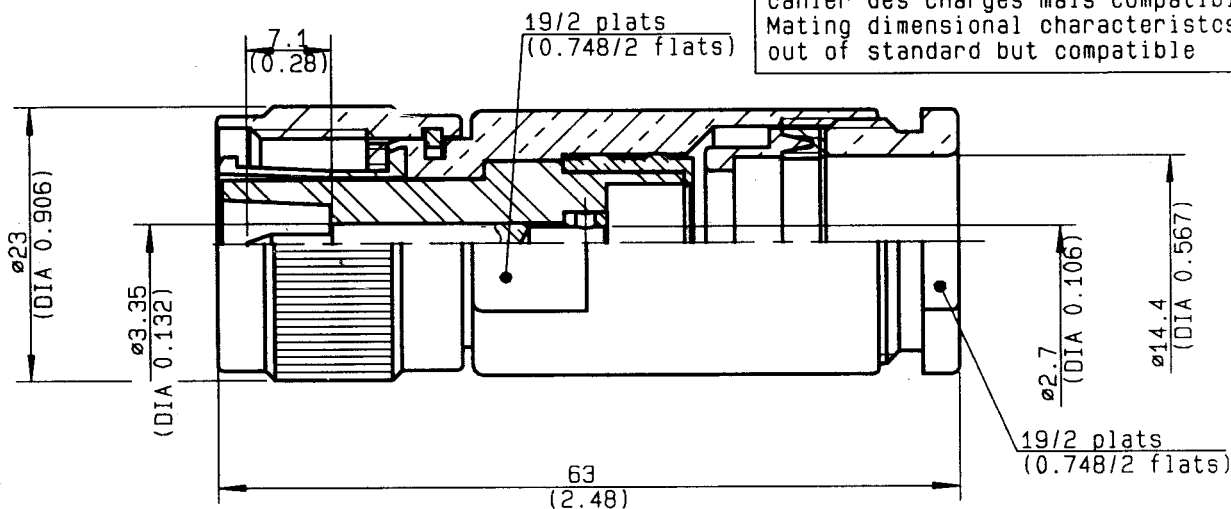
**STRAIGHT PLUG CLAMP
TYPE CABLE 14/50**

R176.027.520

SERIES

HN

Position du contact central non conforme cahier des charges mais compatible.
Mating dimensional characteristics out of standard but compatible



| | | | |
|---------------------------------|------------------------------------|----------------------------|------------------------------------|
| NOMINAL IMPEDANCE | 50 Ω | CABLES : | |
| FREQUENCY RANGE | 0-3 GHz | | |
| TEMPERATURE RATING | -55/+155 °C | | |
| V.S.W.R | TBD + 0 x F(GHz)Maxi | OTHERS CHARACTERISTICS | |
| RF INSERTION LOSS | NA √F(GHz) dB Maxi | | |
| VOLTAGE RATING | TBD Veff Maxi | | |
| DIELECTRIC WITHSTANDING VOLTAGE | 8000 Veff Mini | | |
| INSULATION RESISTANCE | NOTA1 M ΩMini | | NOTA1: 5x10³ M Ω |
| HERMETIC SEAL | NA Atm.cm ³ /s | CABLE RETENTION | 800 N Mini |
| LEAKAGE (pressurized only) | NA | CENTER CONTACT RETENTION | |
| MECHANICAL DURABILITY | 500 Cycles | Axial force - mating end | NA N Mini |
| WEIGHT | 108.2 gr | Axial force - opposite end | NA N Mini |
| SPECIFICATION | | Torque | NA cm.N Mini |
| | | RECOMMENDED TORQUES | |
| | | Mating | cm.N |
| | | Panel nut | NA cm.N |
| | | Clamp nut | 800 cm.N |

| CONNECTOR PARTS | MATERIALS | FINISH | (all values are given in micrometers) |
|-----------------|-----------------|--------------------------|---------------------------------------|
| BODY | BRASS | NICKEL . | |
| OUTER CONTACT | BRASS | NICKEL . | |
| CENTER CONTACT | BRASS | SILVER 5 OVER COPPER 0.5 | |
| INSULATOR | PTFE | - | |
| GASKET | SILICONE RUBBER | - | |
| OTHERS PIECES | BRASS | NICKEL . | |

| | | |
|----------------|------------------|--------------------|
| ISSUE | CREATION DATE | FILE PART-NUMBER |
| 9830A00 | 22-JUL-98 | 97-0001-038 |



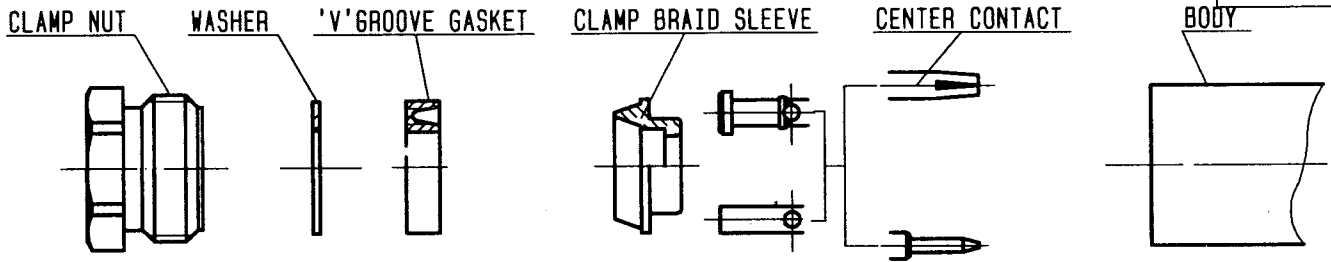
RADIALL®



RADIALL®

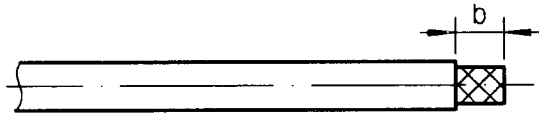
R176.027.520

ISSUE 9830A00 SERIES HN



①

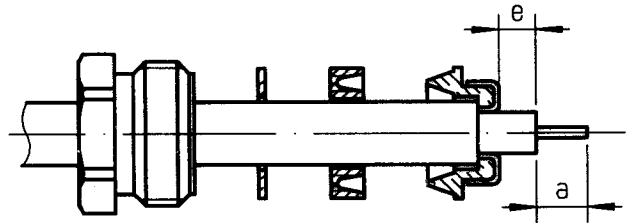
Strip the cable .



| Stripping | a | b | c | d | e |
|-----------|-------|------|---|---|-------|
| inch | 0.236 | 0.65 | 0 | 0 | 0.295 |
| mm | 6 | 16.5 | | | 7.5 |

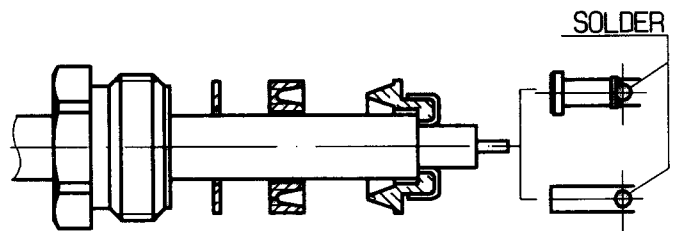
②

Slide clamp nut, washer and 'V' groove gasket onto cable .
 Slide clamp braid sleeve over braid .
 Fold braid back and trim off extra braid .
 Trim dielectric back as shown .



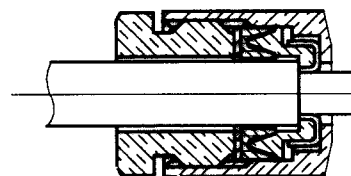
③

Solder the center contact onto cable center conductor .



④

Screw sub-assembly into the connector body .
 (recommended coupling torque 800N.cm)
 70.8in.lb



Hex. : 19 mm /flats
 Hex. : 0.748inch /flats